



P U M P

M A G A Z I N E

BARRY
DRUXMAN

SUPER
SEXY

50

PAGES OF
AVANT GARDE

VALENTINA
IVANCENCO

Issue 27 | July 2015

CONTENTS



COVER:

Model: Valentina Ivancenco
HMUA: Eugene Conde
Accessories: Nigel Crow
Photography: Barry Druxman

PAGE 3:

Model: Valentina Ivancenco
HMUA: Eugene Conde
Accessories: Nigel Crow
Photography: Barry Druxman

PAGE 4-7:

Photographer: Abe Bermudez
Model: Christina Sofina
Makeup/Hair Stylist: Beauty Beat By Sofie
Wardrobe Stylist: Alannah Jones

PAGE 8-13:

Model : Maddi Caroll
Photographer : Fifi's Model Academy
Mua : Christina Radio Make Up & Hair

PAGE 14-19:

Model: Alexa Duarte
Model: Timillia Johnson
Hair: Beth Reiland
Make up: Becky Williams-Gomez
Photographer: Kevin Chavez

PAGE 20-23:

Photographer: Kellie Rodgers
Model: Megan Dillingham of Voices and Talent Agency
MUA/Hair: Bethany Adams

PAGE 24-27:

Models: Lana Miller and Sharen Sitzes
Hair and Makeup: Karla Lambert
Jewelry Designer: Theresa Harnois
Wardrobe: SJ Couture

PAGE 28-29:

Model: Valentina Ivancenco

HMUA: Eugene Conde
Accessories: Nigel Crow
Photography: Barry Druxman

PAGE 30-45:

Model: Chiara Fragomeni
Makeup and Hair: Christina Rodio
Photographer: Megan King Creative
Stylist: Hayley Govorko Creative

REAR COVER:

Model: Valentina Ivancenco
HMUA: Eugene Conde
Accessories: Nigel Crow
Photography: Barry Druxman



PUMP Magazine

Editor In Chief • Amanda-Noel Fischer

Featured Photographer • Barry Druxman

Featured Model • Valetina Ivancenco

Featured Hairstylist • Eugene Conde

Featured Makeup Artist • Eugene Conde

Graphic Designer • Amanda-Noel Fischer

Send Submissions To:

Amandafischer.pumpmagazine@gmail.com

Facebook:

<https://www.facebook.com/PUMPMagazineOFFICIAL>

MagCloud:

<http://www.magcloud.com/browse/magazine/700620>

Follow us on Instagram:

@PUMPMagazine

Cover:

Model: Valentina Ivancenco

HMUA: Eugene Conde

Accessories: Nigel Crow

Photography: Barry Druxman

Issue 27 | July 2015

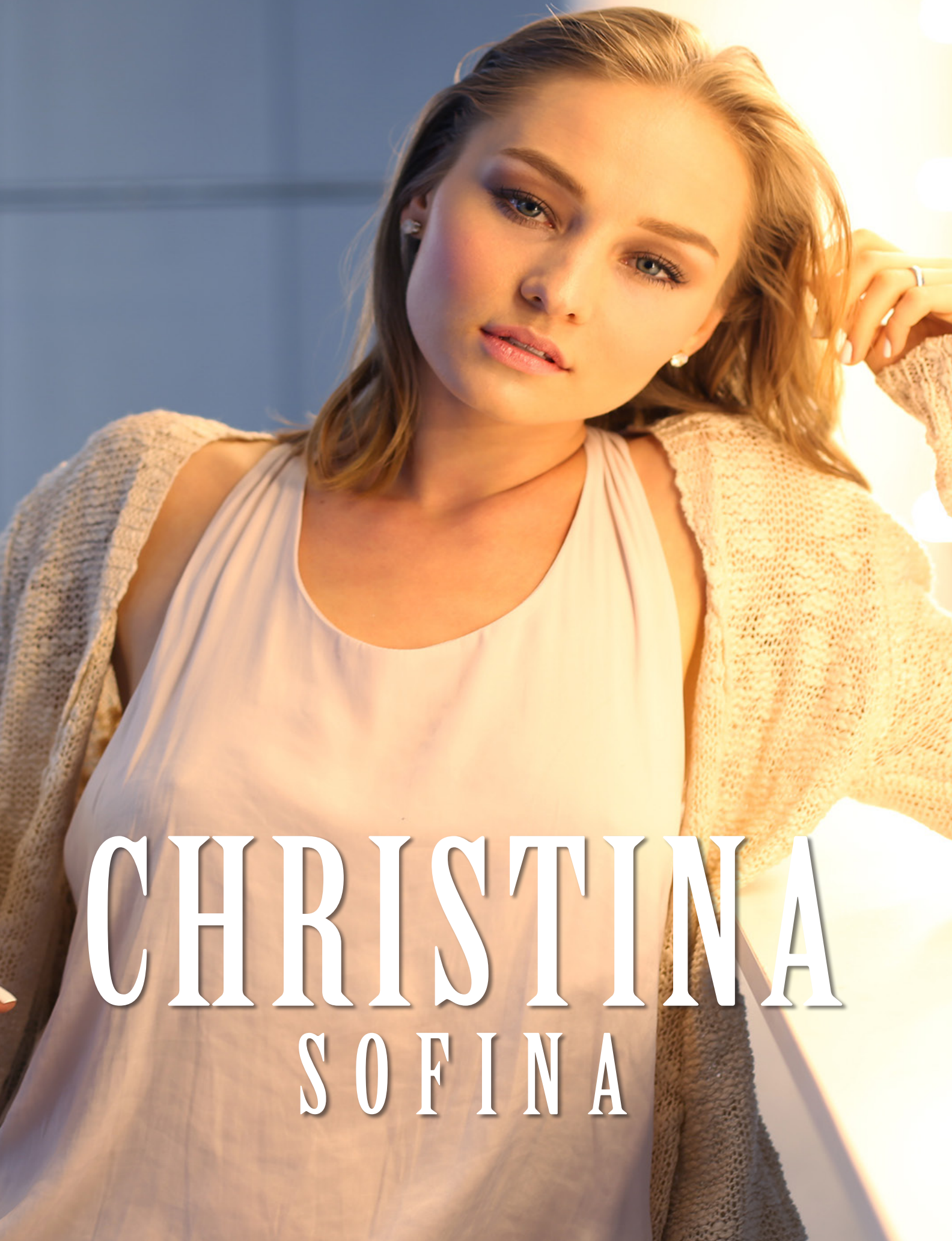


Photographer:Abe Bermudez
Model:Christina Sofina
Makeup/HairStylist:Beauty Beat By Sofie
Wardrobe Stylist: Alannah Jones



CHRISTINA

SOFINA



CHRISTINA

SOFINA



Photographer:Abe Bermudez
Model:Christina Sofina
Makeup/HairStylist:Beauty Beat By Sofie
Wardrobe Stylist: Alannah Jones



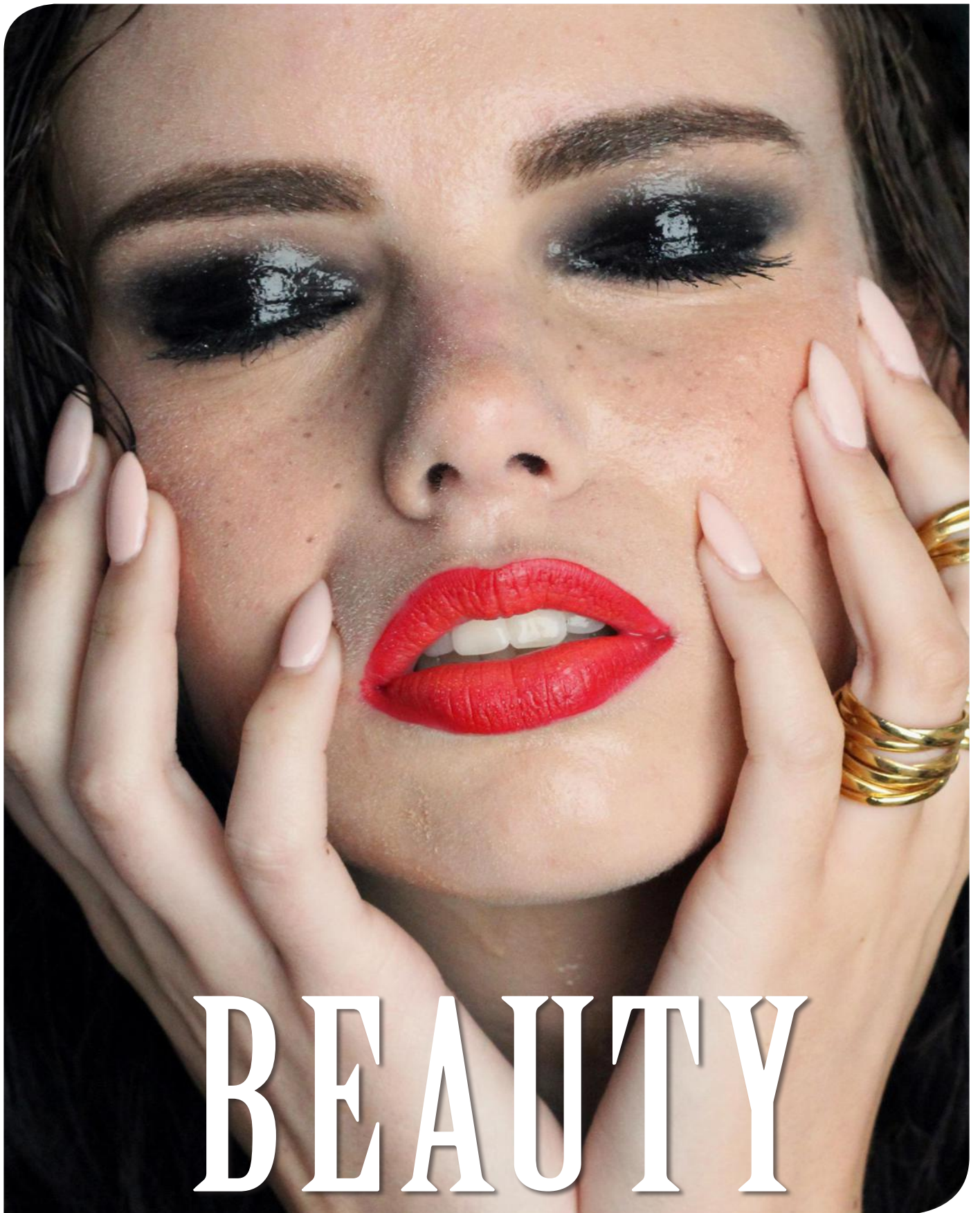
BEAUTY



Model : Maddi Caroll
Photographer : Fifis Model Academy
Mua : Christina Radio Make Up & Hair



Model : Maddi Carol
Photographer : Fifis Model Academy
Mua : Christina Radio Make Up & Hair



BEAUTY

A close-up, high-resolution portrait of a woman's face. She has dark, smoky eye makeup and bright red lipstick. Her hands are visible, with light pink manicured nails, framing her face on both sides. The word "BEAUTY" is superimposed in large, white, serif capital letters across the top of the image.

Model : Maddi Caroll
Photographer : Fifis Model Academy
Mua : Christina Radio Make Up & Hair





LITTLE WHITE FLOWERS



Model: Alexa Duarte
Model: Timillia Johnson
Hair: Beth Reiland
Make up: Becky Williams-Gomez
Photographer: Kevin Chavez



LITTLE WHITE FLOWERS



Model: Alexa Duarte
Model: Timillia Johnson
Hair: Beth Reiland
Make up: Becky Williams-Gomez
Photographer: Kevin Chavez

LITTLE WHITE FLOWERS



Model: Alexa Duarte
Model: Timillia Johnson
Hair: Beth Reiland
Make up: Becky Williams-Gomez
Photographer: Kevin Chavez





MEGAN DILLINGHAM

Photographer: Kellie Rodgers
Model: Megan Dillingham of Voices and Talent Agency
MUA/Hair: Bethany Adams



A photograph of a tree trunk in a forest. The tree trunk is light brown with a textured bark, showing some vertical fissures. It is surrounded by green foliage and fallen brown leaves on the forest floor. The background is dark and out of focus, showing more trees and leaves. Overlaid on the image is the name "MEGAN DILLINGHAM" in a white, serif, all-caps font. The text is centered horizontally and vertically, with "MEGAN" on the top line and "DILLINGHAM" on the bottom line.

MEGAN
DILLINGHAM



Photographer: Kellie Rodgers
Model: Megan Dillingham of Voices and Talent Agency
MUA/Hair: Bethany Adams

BARRY DRUXMAN



Models: Lana Miller and Sharen Sitzes
Hair and Makeup: Karla Lambert
Jewelry Designer: Theresa Harnois
Wardrobe: SJ Couture





BARRY DRUXMAN



Models: Lana Miller and Sharen Sitzes
Hair and Makeup: Karla Lambert
Jewelry Designer: Theresa Harnois
Wardrobe: SJ Couture



VALENTINA IVANCENCO



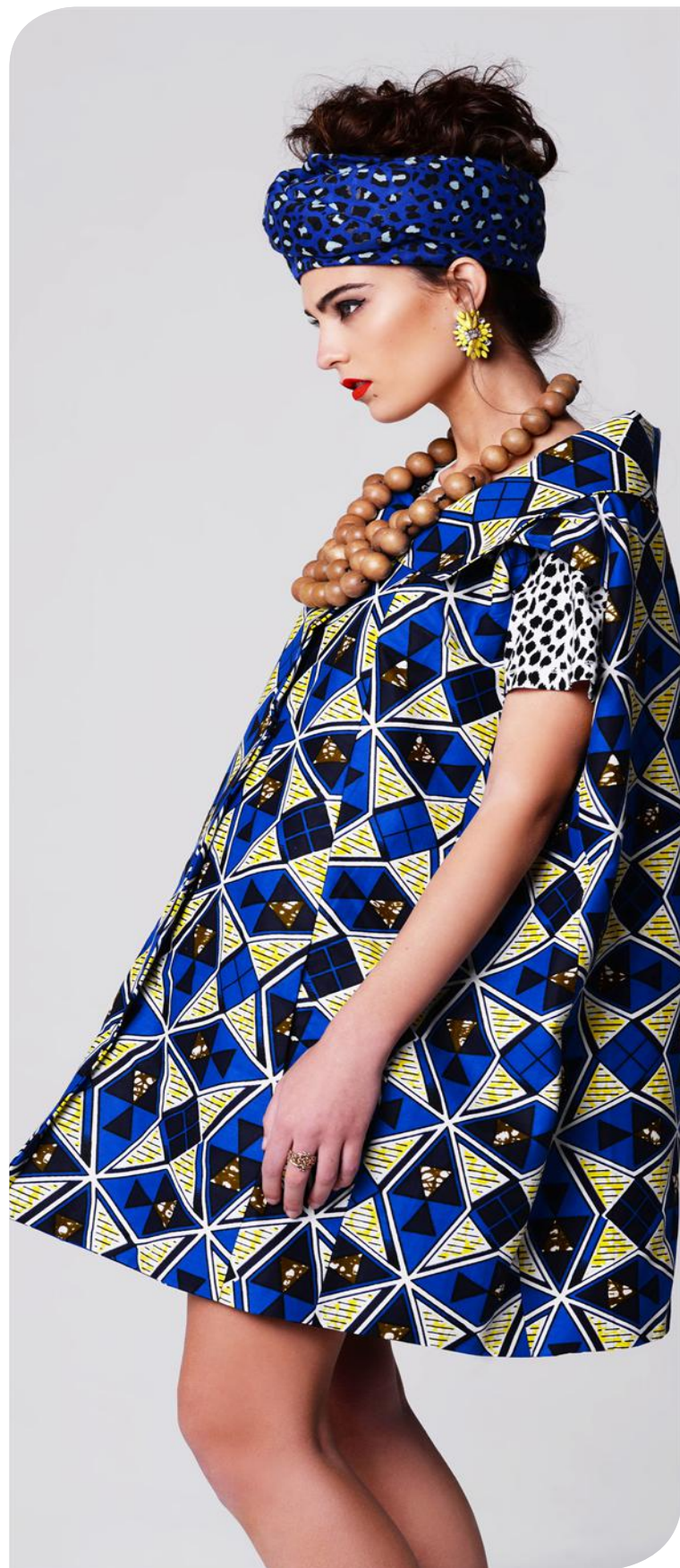
Model: Valentina Ivancenco
HMUA: Eugene Conde
Accessories: Nigel Crow
Photography: Barry Druxman



CHIARA FRAGOMENI



Model: Chiara Fragomeni
Makeup and Hair: Christina Rodio
Photographer: Megan King Creative
Stylist: Hayley Govorko Creative

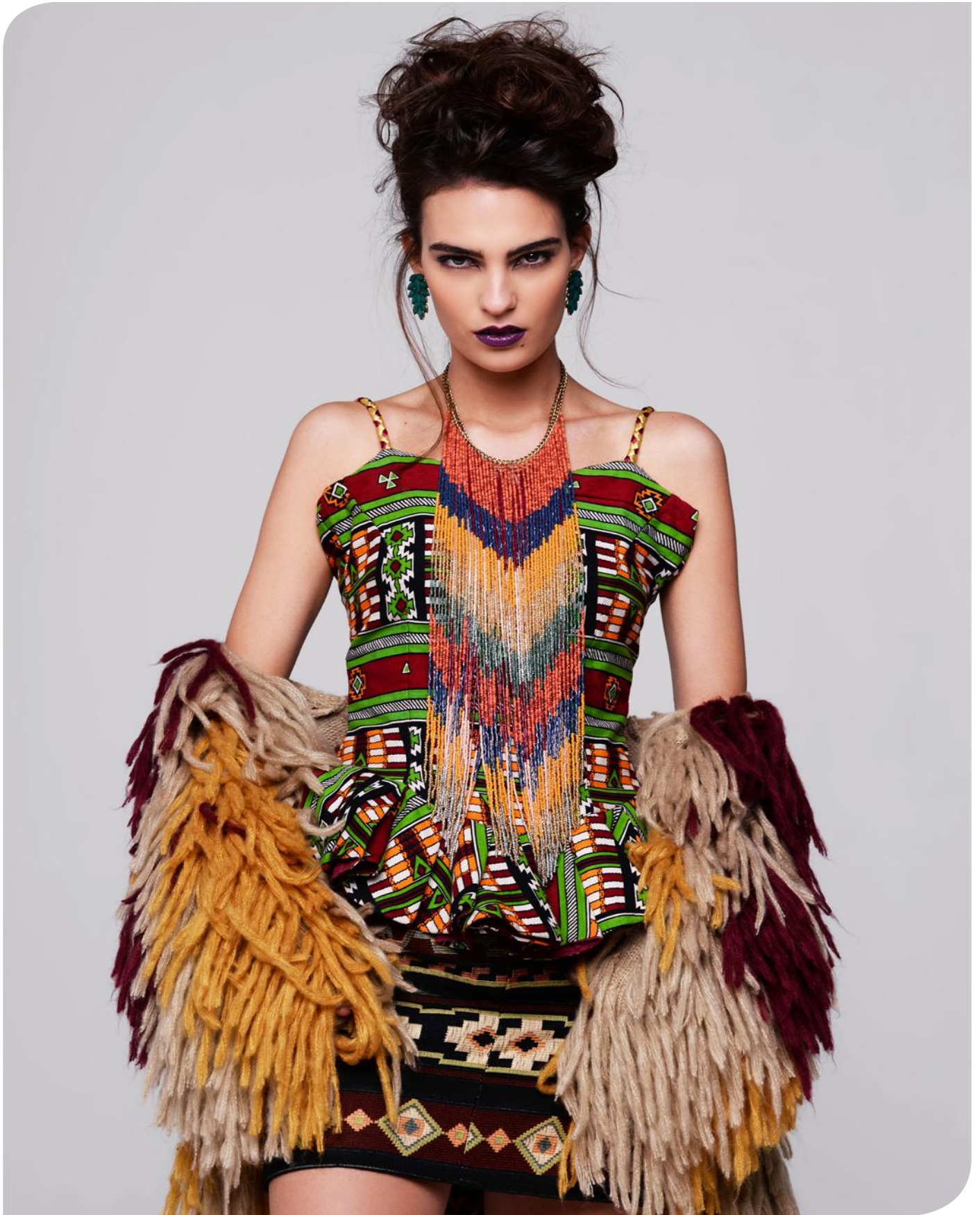




CHIARA FRAGOMENI

Model: Chiara Fragomeni
Makeup and Hair: Christina Rodio
Photographer: Megan King Creative
Stylist: Hayley Govorko Creative







Model: Chiara Fragomeni
Makeup and Hair: Christina Rodio
Photographer: Megan King Creative
Stylist: Hayley Govorko Creative

Model: Chiara Fragomeni
Makeup and Hair: Christina Rodio
Photographer: Megan King Creative
Stylist: Hayley Govorko Creative











CHIARA FRAGOMENI



Model: Chiara Fragomeni
 Makeup and Hair: Christina Rodio
 Photographer: Megan King Creative
 Stylist: Hayley Govorko Creative





CHIARA FRAGOMENI



Model: Chiara Fragomeni
Makeup and Hair: Christina Rodio
Photographer: Megan King Creative
Stylist: Hayley Govorko Creative

A close-up, profile view of a woman's face, focusing on her nose, cheek, and long, dark, wavy hair. The background is a soft, out-of-focus grey.

CHIARA FRAGOMENI

Model: Chiara Fragomeni
Makeup and Hair: Christina Rodio
Photographer: Megan King Creative
Stylist: Hayley Govorko Creative



A woman with dark hair and dramatic eye makeup is wearing a large, ornate hat made of brown leather and straw. She is also wearing a long, beaded necklace with wooden and red beads. The background is a plain, light gray.

PUMP

VALENTINA

IVANCENCO